



Flatirons, Inc.

Surveying, Engineering & Geomatics
www.FlatironsInc.com

CAPABILITIES STATEMENT

Since 1983, Flatirons, Inc. has been a recognized leader in a full range of land surveying services along the Colorado Front Range and beyond. We stand ready to serve you with efficiency, cost effectiveness and confidence.

- Over 61,000 completed projects
- 53 employees in three offices
- 13 mobile field crews
- Over \$1 million invested in equipment, including Trimble and Leica
- 8 licensed professional land surveyors, for work in the following states: Colorado, Wyoming, Utah, Idaho, Arizona, Nevada, California, Texas, South Dakota, North Dakota, South Carolina, North Carolina, Oklahoma and Washington.

SBA and ORCA-certified Small Business under the following NAICS codes:

- 541370 – Surveying & Mapping
- 541360 – Surveying & Mapping, Geophysical
- 541330 – Engineering (Civil and Hydrologic)
- 541340 - Drafting Services

Federal Government & Client Projects

- Bureau of Reclamation Upper Colorado Region
- National Park Service Intermountain Region
- U.S. Fish & Wildlife Service Mountain Prairie Region 6
- USDA Forest Service Mountain Region 2
- Colorado Division of Parks & Wildlife
- Rocky Flats Environmental Technology Site – (\$2.1 million survey budget)
- Anthem Development (\$2.3 million survey budget)
- Buckley Air Force Base/Air National Guard
- Warren Air Force Base
- Pueblo Army Depot
- Rocky Mountain Arsenal
- Shattuck Superfund Site (90% EPA-funded)
- Stapleton Redevelopment
- Lowry Redevelopment
- Invesco Field at Mile High – The Denver Broncos stadium

Services

Boundaries

- Land Survey Plats
- Improvement Survey Plats
- American Land Title Association (ALTA) Surveys
- Subdivision Plats
- Condominium Maps
- Boundary Line Agreements

Design Surveys

- Topographic Exhibits
- As-built Surveys
- Digital Terrain Modeling

Subdivisions

- Subdivision Platting
- Minor Subdivisions
- Lot Line Adjustment Plats
- Lot Line Elimination Plats
- Exemption Plats

Compliance Surveys

- Drainage Certificates
- Elevation Certificates
- Height Verifications
- Setback Verifications
- As-built Surveys
- LOMA Application

Construction Surveying

- Design
- Layout
- Staking
- Quality Control
- As-built Verifications

High Definition Surveying (3D Laser Scanning)

- Architectural
- Construction Quality Control
- Design / Build
- Refineries
- Infrastructure
- Forensics
- Facility management
- Mining
- Accident Reconstruction

Environmental Support

- OSHA Certified
- Respirator Qualified
- Mining Health and Safety
- Department of Energy Beryllium Screened
- Department of Energy Radiological Worker II

Geographic Information Systems

- Data Acquisition
- Aerial Photography
- Orthophoto mapping
- Database Construction
- Data/CAD Conversion

Oil and Gas

- Well Location Exhibits
- Tank Battery Location Exhibits
- Route Surveying
- As-Built
- Contract Crews

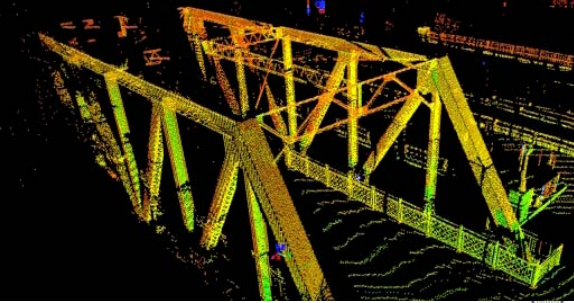
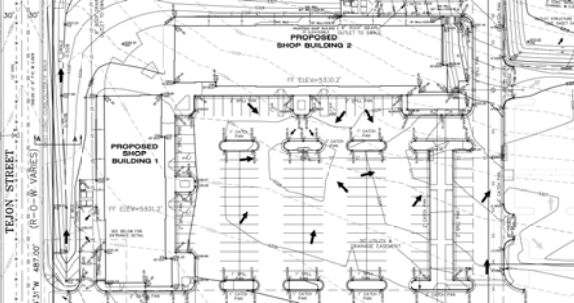
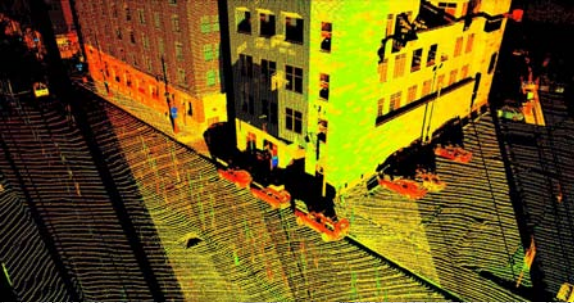
Engineering

- Civil & Hydrologic Design
- Community Development
- Project Management
- Construction Inspections
- Site Investigation
- Low Impact Design (LID)
- Sustainable Design

3825 Iris Avenue, Ste 395
Boulder, CO 80301
Phone: (303) 443-7001
Fax: (303) 443-9830

655 Fourth Avenue
Longmont, CO 80501
Phone: (303) 776-1733
Fax: (303) 776-4355

3660 Downing Street, Unit E
Denver, CO 80205
Phone: (303) 936-6997
Fax: (303) 443-9830



Complex federal government jobs with a surveying/mapping/GIS component often require the need for an outside firm with the staff, technical resources and reputation to deliver timely, high quality work on large projects. Flatirons is a proven performer on such projects. And yet, we are an SBA-certified Small Business.

Flatirons, Inc. is the perfect size on both points. And, we have the track record to prove it.

We are large enough to:

- Bring an ample, diversified and talented staff to projects of any size;
- Demonstrate experience in large Federal government projects;
- Utilize the latest equipment, including Robotic Total Station, Real Time Kinematic GPS and 3D Laser Scanning.
- Maintain 13 mobile crews for flexibility and rapid response;
- Offer strong insurance coverage;

But small enough to:

- Achieve your small business participation goals with confidence;
- Provide clear communications, quality controls and personal service throughout every step of a complex assignment.

Flatirons, Inc. Surveying, Engineering & Geomatics, is a privately owned firm; 50% of our management team owns stock in the company, and is therefore dedicated to the timely and successful completion of each project and to the total satisfaction of every client.

Flatirons, Inc. has partnered with the following corporations:

- Kaiser-Hill Corporation
- URS Corporation
- CH2M Hill
- Washington Group
- ERM



All Inquiries:
cpower@flatsurv.com



We accept all government purchasing cards.



Boulder



Longmont



Denver